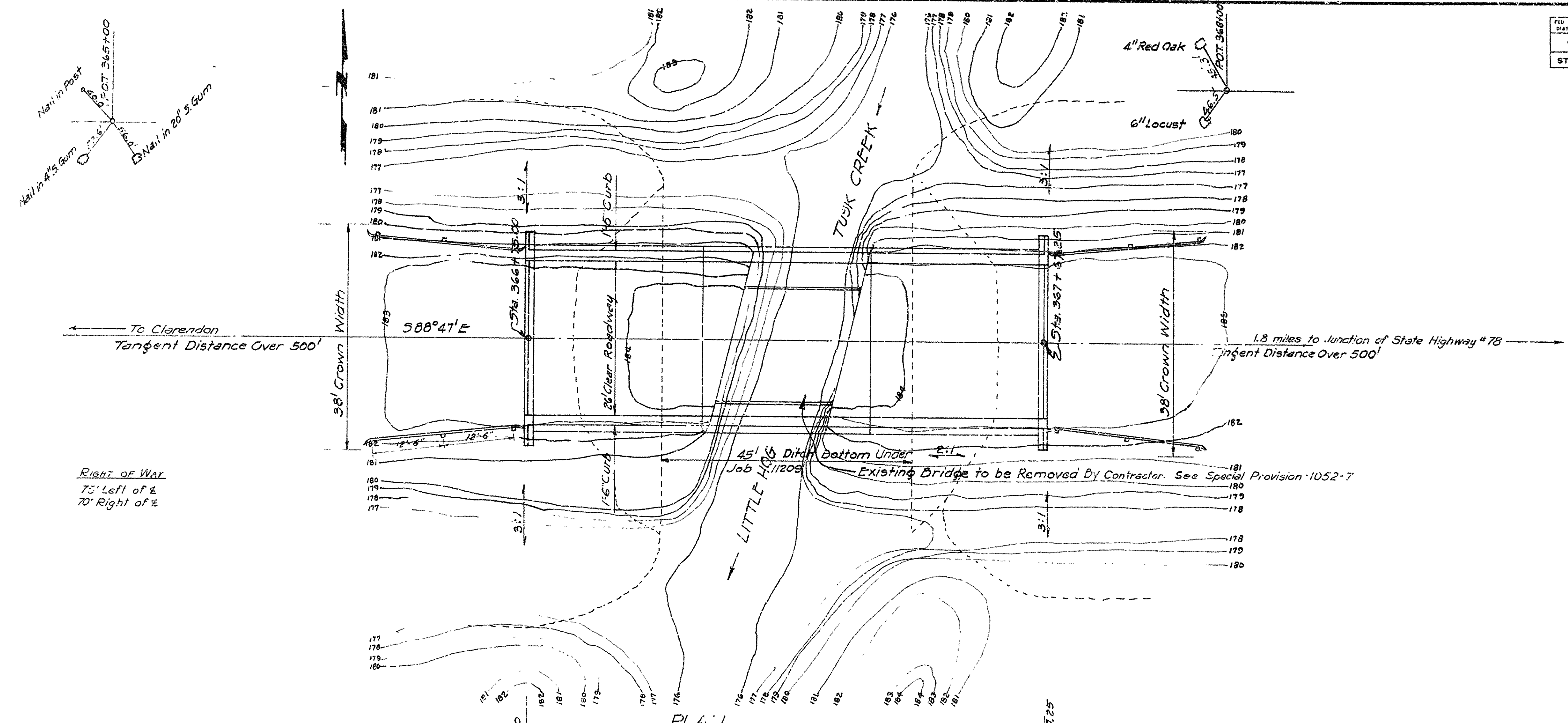
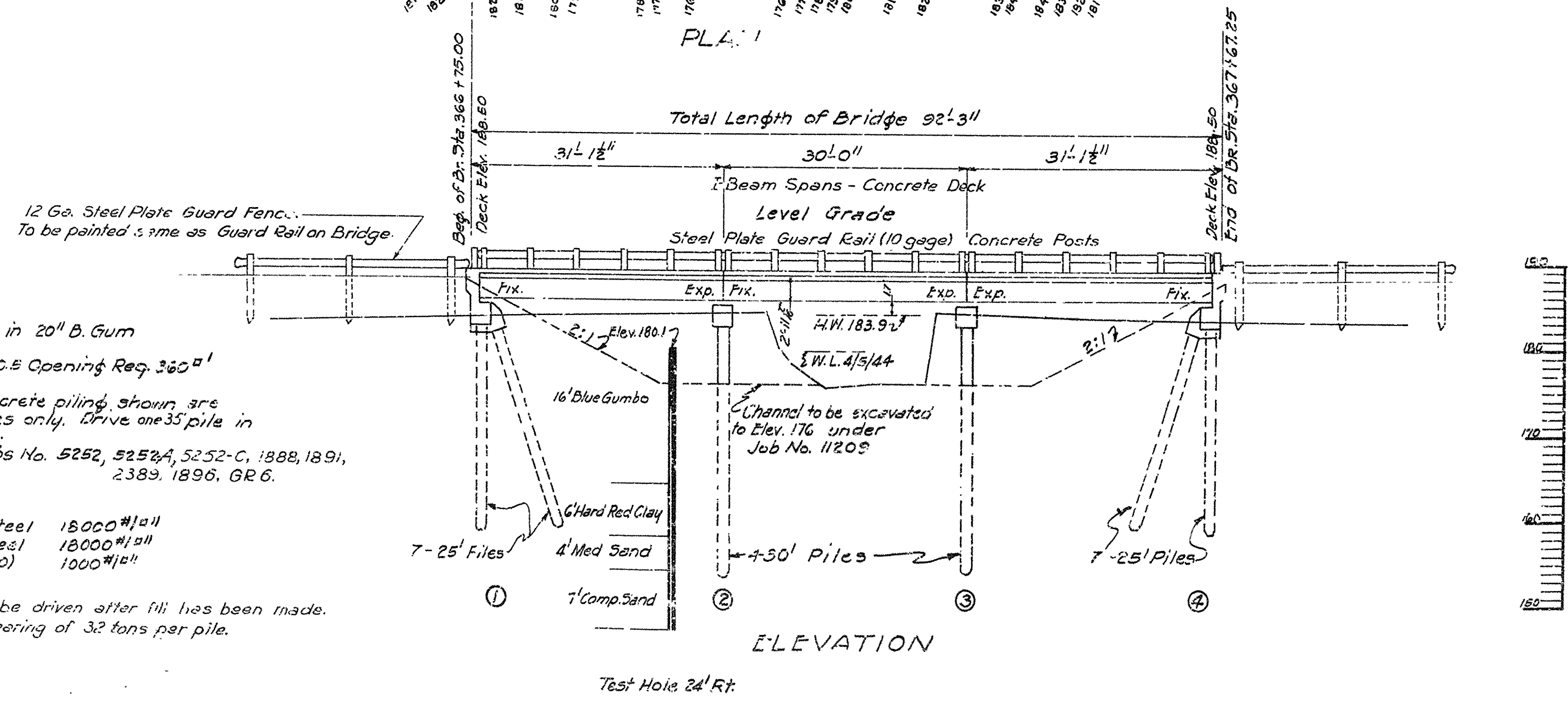


FED. ROAD DIST. NO.	STATE	PROJECT NO.	FISCAL YEAR	SHEET NO.	TOTAL SHEETS
8	ARK.			52	111
STATE JOB NO. 11209					



RIGHT OF WAY  
75' Left of E  
70' Right of E



Revised 5-26-52  
Guard Rail and Guard Fence

LAYOUT OF  
BRIDGE OVER LITTLE HOG TUSK CREEK  
MONROE - EAST AND WEST  
LEE COUNTY  
ROUTE 79 SEC. 15  
ARKANSAS STATE HIGHWAY COMMISSION  
LITTLE ROCK, ARK.  
Drawn By: L.P.C. Date: 6-22-47  
Traced By: L.A.M.E. Date: 6-23-44  
Checked By: L.H.H. Date: 6-16-52  
Scale: 1 in. = 10 ft.  
BRIDGE NO. 2396 DRAWING NO. 6590

H.C. Garner  
PRINCIPAL HIGHWAY ENGINEER (BRIDGE)